

PIANC

The World Association for
Waterborne Transport Infrastructure



Presentation by Mr Geoffroy CAUDE
President of PIANC

at the occasion of the IALA workshop ENG 7

Saint Germain-en-Laye AISM-IALA 9 octobre 2017



Summary of the presentation

1. What is PIANC dealing with?
2. PIANC Geographic Expansion
3. PIANC a growing network
4. PIANC and ports
5. PIANC and dredging
6. PIANC and recreational navigation
7. PIANC and climate change issues
8. PIANC strategic plan
9. PIANC and IALA : common field of interests

1- What PIANC Stands For

**The global association providing guidance
for sustainable waterborne transport infrastructure
for ports and waterways**

- PIANC is the forum where professionals from around the world join forces to provide expert advice on cost-effective, reliable and sustainable infrastructure to facilitate the growth of waterborne transport.
- Established in 1885, PIANC is the longest-standing association in its field, and continues to be the leading partner for governments and private sector in the design, development and maintenance of ports, waterways and coastal areas.

1. Seven Reasons to Join PIANC

1 Join a worldwide *network* of fellow experts and professionals

2 Benefit from more than a century of *expertise*

3 Gain access to advanced *technical information*

4 Share your knowledge and experience through *Working Groups, Commissions* and National Sections

5 Make your voice heard within the community and on the *international scene*

6 Use a unique springboard for *Young Professionals*

7 Team up with *public decision makers*

2. PIANC Geographic Expansion Our Membership

**40 Qualifying Members
of which 27 have a National Section**

(i.e. governmental and non-governmental organisations representing a country)

more than 2,000 Individual Members
(Students included)

more than 450 Corporate Members
(public authorities, private companies (consultants, contractors, dredging companies),
universities, port authorities, other public- and private-sector organisations)

3- PIANC is supported by 7 Platinum members



3- PIANC is networking with 11 Sister Associations



Saint Germain-en-Laye AISM-IALA 9 octobre 2017

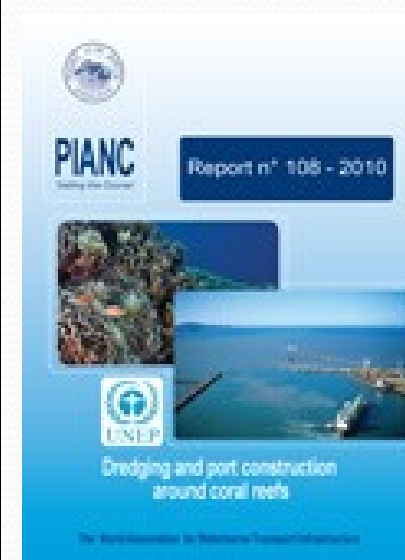


4- PIANC and ports

2012	WG 115	Criteria for the (un)loading of container ships (only available as PDF)	38 €
2012	WG 116	Safety aspects of berthing operations of oil and gas tankers (only available as PDF)	90 €
2012	WG 117	Use of hydro/meteo information to optimize safe ports access (only available as PDF)	90 €
2013	WG 118	Direct access to maritime ports by adapted inland waterway vessels (only available as PDF)	48 €
2013	WG 120	Water injection dredging (only available as PDF)	84 €
2014	WG 121	Harbour Approach Channels Design Guidelines (only available as PDF)	150 €
2014	WG 122	Tsunami Disasters in Ports due to the Great East Japan Earthquake (only available as PDF)	95 €
2014	WG 135	Design Principles for Small and Medium Marine Container Terminals (only available as PDF)	115 €
2014	WG 158	Masterplans for the development of existing ports (only available as PDF)	150 €
2014	WG 144	Classification of Soils and Rocks for the Maritime Dredging Process (only available as PDF – preliminary only available for PIANC members)	
2014	WG 180	Guidelines for Port Constructions Related to Bow Thrusters (only available as PDF)	150 €
2015	WG 165	Design and Maintenance of Container Terminal Pavements (only available as PDF)	185 €
2016	WG 144	Classification of Soils and Rocks for the Maritime Dredging Process (only available as PDF)	160 €
2016	WG 152	Guidelines for Cruise Terminals (only available as PDF)	82 €
2016	WG 153	Recommendations for the Design and Assessment of Marine Oil and Petrochemical Terminals (only available as PDF)	195 €
2016	WG 172	Design of Small to Mid-Scale Marine LNG Terminals including Bunkering (only available as PDF)	100 €
2016	WG 162	Recommendations for Increased Durability and Service Life of New Marine Concrete Infrastructure (only available as PDF)	110 €
2016	WG 196	Criteria for the Selection of Breakwater Types and their Related Optimum Safety Levels (only available as PDF)	195 €

5- PIANC and dredging

2003	EnviCom 7	Ecological and Engineering Guidelines for Wetlands Restoration in relation tot the Development, Operation and Maintenance of Navigation Infrastructures <i>Recommandations en ecologie et ingenierie pour la restauration des zone humides en rapport avec le developpement, l'utilisation et la maintenance des infrastructures de navigation</i>
2006	EnviCom 8	Biological Assessment Guidance for Dredged Material
2006	EnviCom 10	Environmental Risk Assessment of Dredging and Disposal Operations
2009	WG 100	Dredging, management practices for the environment – A structured selection approach (+ cd-rom)
2009	WG 104	Dredged material as a resource – Options and Constraints (+cd-rom)
2009	PIANC 107	Sustainable waterways within the context of navigation and flood management
2009	WG 109	Long-term management of Confined Disposal Facilities for Dredged Material
2010	WG 108	Dredging and Port Construction around coral reefs
2013	WG 136	Sustainable maritime navigation (only available as PDF)
2014	WG 143	Initial Assessment of Environmental Effects of Navigation and Infrastructure Projects (only available as PDF)
2014	WG 150	Sustainable Ports – A Guide for Port Authorities (only available as PDF)
2014	WG 124	Dredging & Port Construction: Interactions with Features of Archaeological or Heritage Interest (only available as PDF)



6- PIANC and recreational navigation

2001	Special01	Marina service connections <i>Connexions des services d'alimentation dans les marinas</i>
2002	Rec. 12	Recreational Navigation and Nature <i>La navigation de Plaisance et la Nature</i>
2002 2005	Rec.10	Mooring systems for recreational craft <i>Systèmes d'amarrage pour la navigation de plaisance</i>
2003	Rec.13	Dredging of Marinas <i>Dragage de marinas</i>
2004	Rec.14	Disability Access Guidelines for Recreational Boating Facilities
2008	WG 98	Protecting Water Quality in Marinas
2009	WG 105	The use of alternative materials in marine structure construction
2013	WG 132	Dry stack storage (only available as PDF)
2013	WG 134	Design and operational guidelines for super yacht facilities (only available as PDF)
2014	WG 131	Catalogue of prefabricated marina elements (only available as PDF)
2015	WG 130	Anti-sedimentation systems for Marinas and Yacht Harbours
2016	WG 149/1	Guidelines for Marina Design – part I
2016	WG 149/2	Guidelines for Marina Design – part II



Expected publications in 2017

RecCom 169 Fire System Detection and Controls in Marinas

InCom 173 Movable Bridges and Rolling Gates – Design,
Maintenance and Control – Lessons Learnt from Experience

EnviCom 174 Joint IAPH-PIANC report : Sustainability Reporting
for Ports

EnviCom 175 A Practical Guide to Environmental Risk
Management for Navigation Infrastructure Projects

Envicom 176 A Guide for Applying Working with Nature to
Navigation Infrastructure Projects

RecCom-MarCom-InCom 182 Underwater Acoustic Imaging of
Waterborne Transport Infrastructure

Reports under progress

MarCom 160 expert group: General Principles for the Design of Maritime Structures

MarCom 164 Upgrade of Port Terminals by Increasing Dredged Depth

MarCom 171 Ship Handling Simulation Dedicated to Channel and Harbour Design

EnviCom 178 Climate Change Adaptation for Maritime and Inland Port and Navigation Structure

InCom 179 How to Deal with the New Ships in the CEMT '92 Classification Towards a New CEMT (ITF)

Task group 181 The State and perspectives of waterborne transport infrastructure worldwide (*from PIANC's Resolution San Francisco 2014*)

RecCom 183 Innovative Products and Technologies in Marinas

7. PIANC and Climate Change Issues

1994 Creation of EnviCom

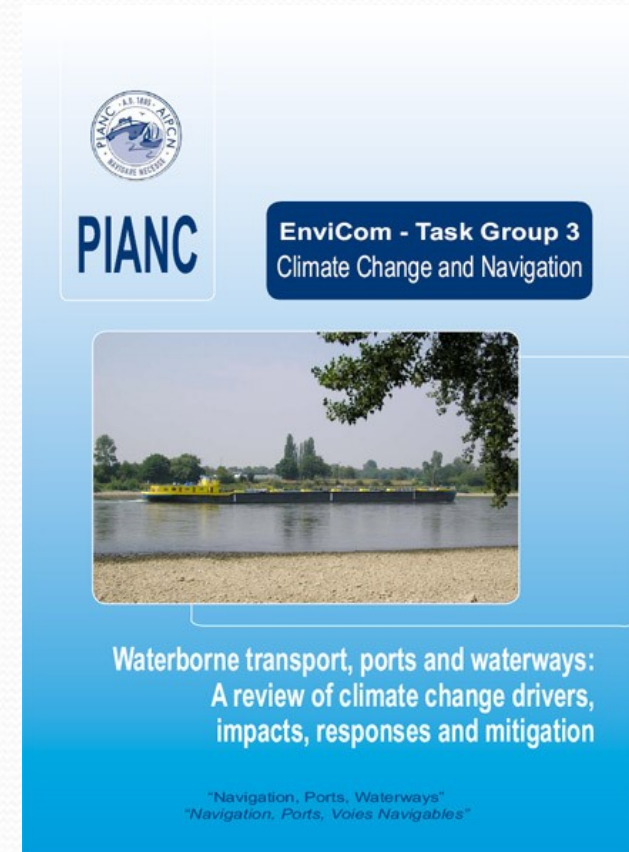
2006 EnviCom TG3: the CC drivers

2008 Creation of the PTGCC

2015 COP 21 Paris

2016 COP 22 Marrakech

2017 COP 23 Bonn



*Freely accessible since 2008
and under revision*

8- PIANC Strategic Plan 2014-2018

VISION:

To be the leading international source of knowledge on waterborne transport infrastructure.

MISSION:

Provide expert guidance and technical advice through high-quality technical reports and keep the international waterborne transport community connected through a variety of products on a global scale.

During the 2014-2018 timeframe, PIANC shall:

- 1) Promote the development and improvement of global waterborne transport infrastructure and enhancement of its economic, environmental and social benefits
- 2) Strengthen the network by focusing on new member countries, universities and young professionals
- 3) Promote risk assessment as a tool for addressing safety and hazard issues
- 4) Promote climate change adaptation strategies
- 5) Promote and implement the concept of 'Working with Nature'
- 6) Strengthen its capabilities and enhance its visibility
- 7) Enhance its internal and external relationships

6th PIANC YP Biennial Technical Visit

Location:

Sydney, NSW

Cairns, Qld (Hilton Hotel)

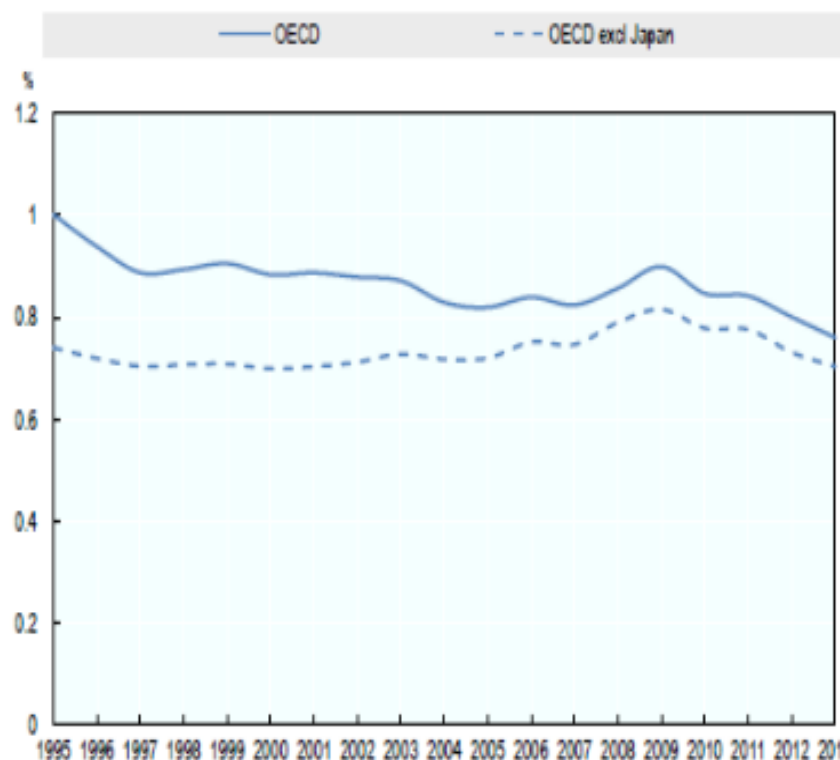
Dates:

16-20 June 2017



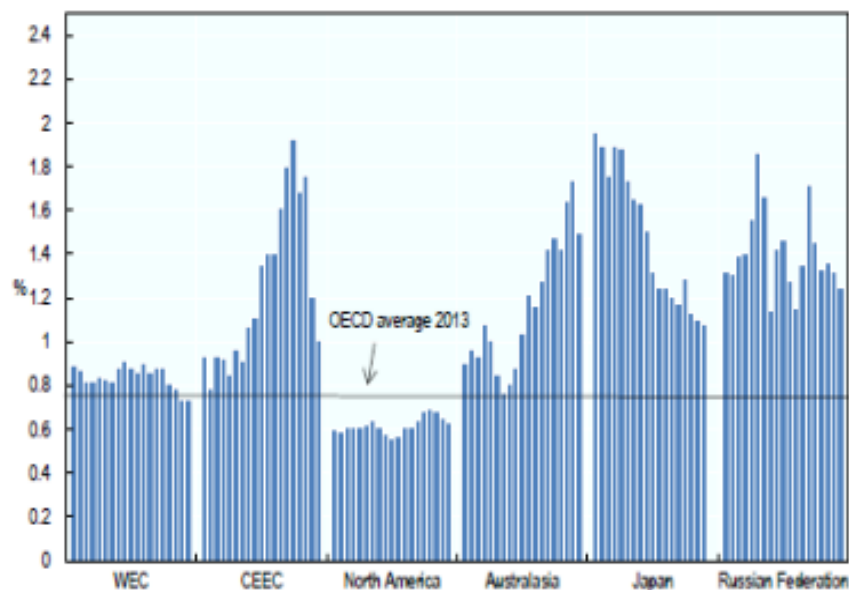
Needs for financing new waterborne infrastructures PIANC TG 181

Figure 1. Investment in inland transport infrastructure in the OECD 1995-2013
(as a percentage of GDP, at current prices)



Source: International Transport Forum at the OECD estimate. Note: OECD includes 30 countries (excludes non-ITF states Chile and Israel. See methodological note for details of data and coverage.)

Figure 2. Investment in inland transport infrastructure by region 1995-2013
(as a percentage of GDP, at current prices)



Source: International Transport Forum at the OECD. Note: WEC includes Austria, Belgium, Denmark, Finland, France, Germany, Greece, Iceland, Ireland, Italy, Luxembourg, Malta, Netherlands, Norway, Portugal, Spain, Sweden, Switzerland, Turkey and the United Kingdom. CEEC includes Albania, Bulgaria, Croatia, Czech Republic, Estonia, FYROM, Hungary, Latvia, Lithuania, Montenegro, Poland, Romania, Serbia, Slovakia and Slovenia. North America includes Canada, Mexico and the United States. Australasia includes Australia and New Zealand.

9- IALA and PIANC : common field of interests

- Technical reports involving aids to navigation , e-navigation , cybersecurity, aso...
- Inland waterways and RIS
- Arctic navigation
- Academies , universities and training
- Target countries (South America, Asia, Canada, Russia)
- Participation in regional events (Nord-PIANC, ICOPMAS, Med days, AAPA, ...)

See you at our next PIANC World Congress

34rd PIANC WORLD CONGRESS
Panama in May 2018

See you at our next PIANC-SMART Rivers Conference

PIANC-SMART Rivers Conference
Lyon , France in September 2019

See you at the next PIANC-COPEDEC Conference

PIANC-COPEDEC X
Tehran, Iran in 2020

Saint Germain-en-Laye AISM-IALA 9 octobre 2017



Thank you for attention

Merci de votre attention